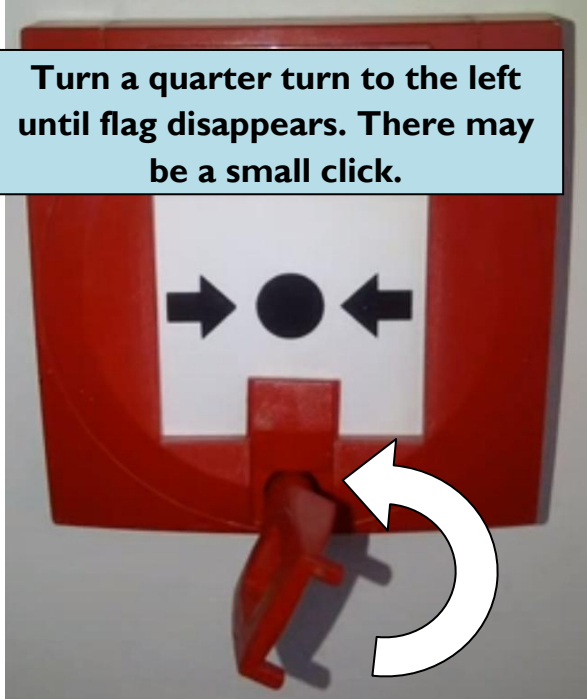


Resetting a New Call Point

Grab a red key from wherever it is located at your workplace.



Lift up slot in front of call points.



Turn a quarter turn to the left until flag disappears. There may be a small click.



When flag disappears, remove key.



Reset the local fire panel.

If linked, reset the main fire panel.

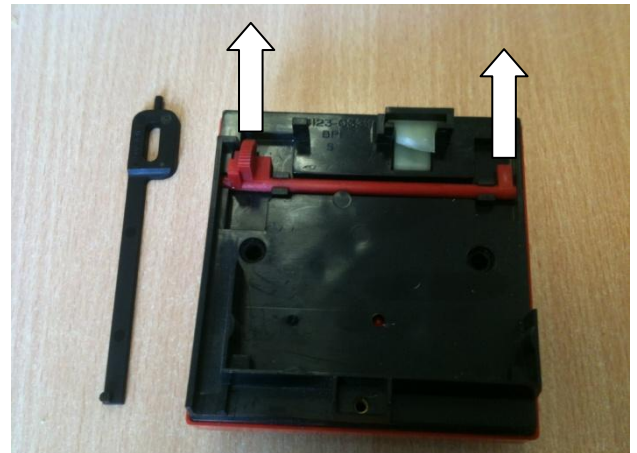
Replace key where found and write about incident in your fire log book.

Resetting a Square Break Glass Call Point

Grab the long black key from wherever it is located at your workplace.



Take red plastic cover off by using top of the key (A). If stiff, use an Allen key.



When cover is off, remove broken glass and locate red section upwards.



Place key upside down so Allen key section A is facing down.



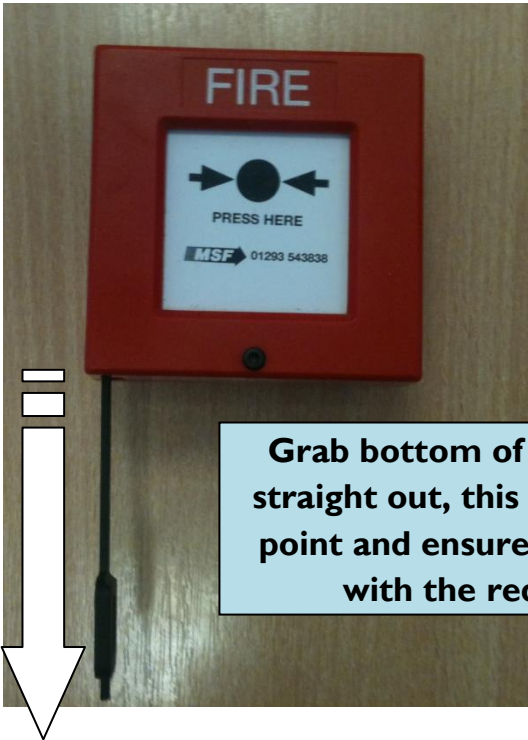
Place new glass square inside so it rests without you holding it.



With key still in place, reattach the red cover. Use thumb and forefinger to initially screw the Allen key in.



The glass will not yet be flush with the cover, there will be a gap at the top. This is normal.



Grab bottom of key and pull straight out, this will reset call point and ensure glass is flush with the red cover.



No gap now.

Afterwards reset the local fire panel.

Reset the main fire panel if linked.

Replace key where you found it and write up incident in your fire log book.

